



Leader Unifeed
Vertical System
by **AG.M**

WE ARE THE STORY ...

So innovative, so strange, so new
to create caos and amazement in the common
vision of the mixer wagon.

Innovating the world of mixing? Tiziano Faccia did it.

In 1980 he patented the first wagon with vertical mixing with
cylindrical shape and conical vertical auger: large at the
bottom and narrower at the top.

Today, to see this type of machine, the operators of the sector
understand immediately that it is a mixer wagon but at the time it was
not so. Initially the vertical mixer wagon was much derided than
appreciated for its efficiency and functionality.

The evolution of this product is due to the tenacity and the genius of the man who invented it.

Tiziano Faccia worked for many years in touch with the first customers, who immediately sensed the
qualities and the potential of the machine, and interpreting their needs, so in 1984 he brought and
patented his innovations to the previous model by increasing even more the already extraordinary
performance.

SO MANY THANKS TO THESE BREEDERS.

This machine has been the first that allows to introduce every sort of product: long and fibrous, whole
giant bales, square or cylidrical; an unthinkable thing until then for the other mixers in the market,
moreover for the incredible ability to maintain a natural mix of the products without alterations of the
organoleptic charateristics. These have been the reasons of the success of this machine, imitated in Italy
and abroad, but having the original is possible only having AGM's or AFT's products, that are studied and
developped to guarantee all the necessary standards to satisfy the breeders' needs in the various areas
all over the world.

Why Vertical Mixer Inventor? Because we invented it in 1980.

Some Patents of our more important inventions.

1980 - Patent and construction of the first vertical
mixer wagon in the world.

1984 - Patent and construction of the first vertical mixer wagon with the shape of a trunk of cone
with 1 or 2 augers equipped with knives and counter-knives.

1986 - Patent and construction of the first vertical self-propelled mixer wagon with mechanical
transmission.

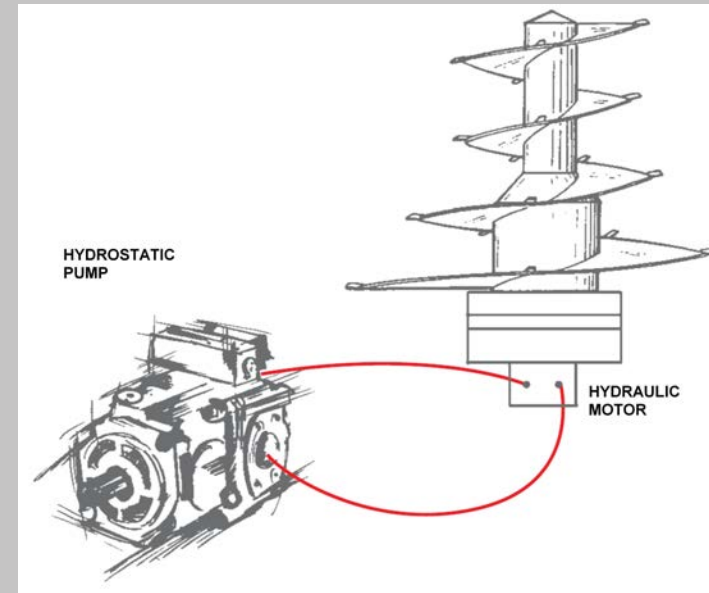
1992 - Patent and construction of the first vertical self-propelled mixer wagon with hydraulic
transmission and high-pressure pumps.

2005 - Patent and construction of the first vertical self-propelled mixer wagon with 2 or more augers
located on different planes.

2006 - Patent of the mill with 2 rotors.

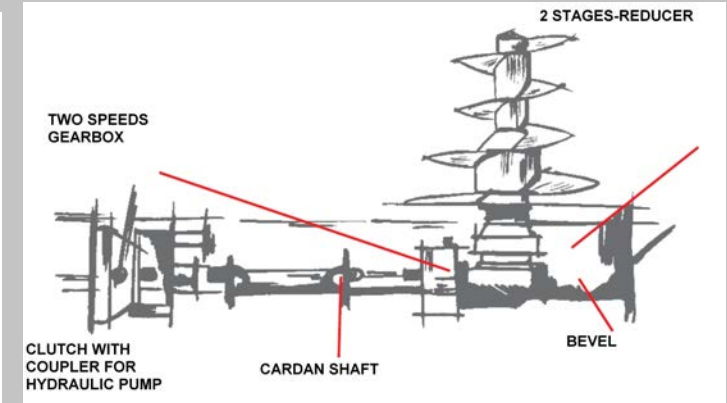


AND AFTER THE TRAILED WAGON HERE WE ARE WITH THE SELF- PROPELLED AND ITS EVOLUTION: HYDRAULIC AND MECHANICAL



Hydraulic efficiency 0.88 - 0.90

- Constructive simplicity
- Reduced maintenance
- Small or large quantities of product can be mixed thanks to the variation system of turns from 0 to 44 with a total tank cleaning without ever having to stop for vary the speeds of cutting the product, such as bales of various types
- Reduced fuel consumption



Mechanical efficiency 0.70

- Many moving parts involve more breaks and more maintenance such as: clutch play, lubrication and oil replacement various components.
- Variation of revolutions only with diesel engine
- Two mechanical gears
- Need to stop for insertion
- Compromised the good functioning of the machine by loading even small ones product quantity, for low screw rotation speed
- Limited working speed
- Greater fuel consumption and lower performance due to long operational work.





**A BIG MIXER WAGON FOR
SMALL BREEDINGS WITH THE
EASY AND EFFICACIOUS
MIXING OF THE AG.M – AFT’S**

A good mixed means:
no to mastitis, no to abomasal displacement and to podal problems, more milk,
more quality and more fertility = MORE PROFIT.

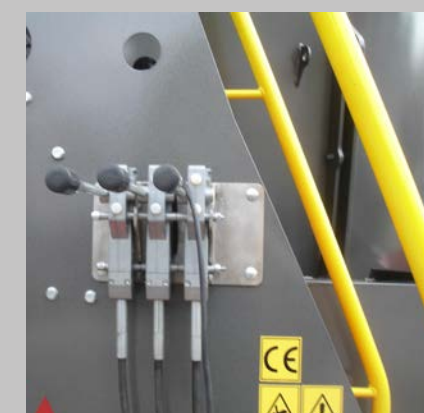
Our vertical mixer wagons with one or more augers guarantee a **VERTICAL AND
NATURAL MIXING PROCESS OF THE PRODUCT.**

These are just some of the advantages that our type of mixing offers:

- not anymore breakage due to the accidentally introduction of foreign bodies into the mixing tank;
- less frictional effects, and therefore a longer life of the mechanical components in motion;
- not anymore obstructions of the mixing process due to long and fibrous products that twist around the augers;
- easy and fast introduction of straw-bales with cylindrical or square shape without any problem;
- a softer and more homogeneous final product;
- less time needed to processing;
- the product doesn't change or lose its own horganoleptic characteristics;
- fuel savings.



LEVER FOR AN EASY INSERTION AND RELEASE OF THE MANUAL COUNTER-KNIVES



Simple and brilliant this wagon had a great merit: that of having changed the way of working to breeders, from 1980. This machine model with an auger, sold and used all over the world, is synonymous of reliability and robustness for many years. The practicality to use, the mixing speed, the compactness, are its strengths. The mixing tank is equipped with two or at the request 4 large counter-knives (Electronic Cut or new Intelligent Telescopic Cut), driven with a timed electronic device, acting in contrast to the mounted blades along the perimeter of the auger, thus favoring a better cutting and mixing of the product. The auger is positioned to overhang the upper cross member, its motion is given by a planetary gear unit, its special shape has been designed to impart to the product during the step of machining a rotary and translatory motion from the bottom to the top, ensuring an excellent product mixed and at the same time preventing the escape from the tank during the cutting phase.

The mixing process takes 3-4 minutes, the result is a soft product, homogeneous and without overheating. Our experience has led us to build new welded double-H frames with bolted components and with variable attack towing from 45 to 90 cm so adaptable to the tractor hitch.

RAPID EQUIPPED WITH FORAGE CHARGER



RAPID SUPER CHICKENS & PIGS
EQUIPPED WITH RADIO
CONTROL SYSTEM FOR THE
AUGER UP TO 8 METERS OF
HEIGHT.
THE BEST FOR PIGS' OR/AND
CHICKENS' BREEDINGS



RAPID WITH **GHIBLI FAN**
STRAW BLOWER FOR
LITTERS.



SELF-PROPELLED DE-
ENSILER FOR CHARGING THE
TRAILED MIXER WAGON



INTELLIGENT TELESCOPIC CUT
New Patent

The new Intelligent Telescopic-Cut counter-knife:

- eliminates the spillage of the product from the walls of the tank not having any type of openings with the exterior of the same;
- thanks to the new shape is opposed to the movement of product avoiding the spillage of the product through the 'upper opening';
- reduces the cutting and mixing times and then determines a saving in terms of fuel, pollution and usury of the machine;
- it also avoids overheating of the product that will have a clean cut and not frayed thanks to the insertion system, form and the help of the blades at the ends of the counter-knife.



EQUIPPED VERSION WITH BOGIE,
INDICATED FOR HEAVY LOADS AND
APPROVAL



ADDITIONAL REAR
DISCHARGE DOOR



HOPPER FOR
FLOURY
PRODUCTS AND
FOOD



SPECIAL DISCHARGE DOOR FOR
HIGH FEEDERS



RAPID VERTICAL TRAILED SINGLE AUGER WAGON

Model		RAPID	RAPID	RAPID	RAPID	RAPID	RAPID
Series		AUTHENTIQUE	AUTHENTIQUE	AUTHENTIQUE	AUTHENTIQUE	AUTHENTIQUE	AUTHENTIQUE
Capacity MC		10	12	14	17	20	22
Required power (PTO 540)	CV min/max	55/70	60/75	70/85	80/95	85/100	90/105
	Kw min/max	40/52	45/55	52/63	59/70	63/74	66/77
Width	Mm	5200	5320	5580	5850	5950	6200
Length	Mm	2450	2450	2550	2900	2900	2000
Height	Mm	2750	2930	3030	3150	3450	3700
Weight	Kg	5100	5660	6540	6780	6900 (7400 with bogie)	7180
Double h-frame built in high resistance plate		yes	yes	yes	yes	yes	yes
The mixing tank is 8 mm thick bolted on the bottom		si	si	si	si	si	si
Bottom tank thk mm		20	20	25	25	25	25
Ladder with viewing platform		yes	yes	yes	yes	yes	yes
Special vertical mixing auger thickness 15 mm		yes	yes	yes	yes	yes	yes
Planetary gearbox		yes	yes	yes	yes	yes	yes
Auger knives n°		8	8	9	10	11	11
N° 2 counter-knives		yes	yes	yes	yes	yes	yes
Unloading port endowed by hydraulic piston		yes	yes	yes	yes	yes	yes
Bilateral unloading belt made of rubber and the bottom manufactured with painted steel sheets		yes	yes	yes	yes	yes	yes
Special unloading security plate		yes	yes	yes	yes	yes	yes
Unloading height mm		550	550	620	620	620	620
Track mm		2050	2050	2100	2200	2200	2300
Weighing system with n° 4 loading cells		yes	yes	yes	yes	yes	yes
Axle with 8 wheel studs		yes	yes	yes	yes	yes	yes
Two speeds gearbox		yes	yes	yes	yes	yes	yes
N° 4 Twin wheels (single wheel on request)		7.00 x 15	215/75 R17,5	215/75 R17,5	245/75 R17,5	245/75 R17,5	265/70 R19,5
Stabilizer foot		yes	yes	yes	yes	yes	yes

The technical data are indicative, the builder reserves him to modify them in every moment. All the standard measures are modifiable on application of the Client. Available to asked for a vast range of accessories.

ZEUS VERTICAL TRAILED SINGLE AUGER WAGON

Model		ZEUS	ZEUS	ZEUS	ZEUS	ZEUS
Series		AUTHENTIQUE	AUTHENTIQUE	AUTHENTIQUE	AUTHENTIQUE	AUTHENTIQUE
Capacity MC		6	8	10	12	14
Required power (PTO 540)	CV min/max	50	60	55/70	60/75	70/85
	Kw min/max	37	45	40/52	45/55	52/63
Width	mm	4200	4800	5050	5150	5400
Length	mm	2200	2300	2450	2450	2550
Height	mm	2300	2540	2700	2800	3000
Weight	Kg	2735	3020	4600	4860	4100
Frame		yes	yes	yes	yes	yes
The mixing tank is 8 mm thick welded on the bottom		yes	yes	yes	yes	yes
Bottom tank thk mm		15	15	15	20	20
Ladder with viewing platform		yes	yes	yes	yes	yes
Special vertical mixing auger thickness 15 mm		yes	yes	yes	yes	yes
Planetary gearbox		yes	yes	yes	yes	yes
Auger knives n°		6	7	8	8	9
N° 2 counter-knives		yes	yes	yes	yes	yes
Unloading port endowed by hydraulic piston		yes	yes	yes	yes	yes
Special unloading security plate		yes	yes	yes	yes	yes
Unloading height mm		700	750	750	750	750
Track mm		1750	1750	1950	1950	2100
Weighing system with n° 4 loading cells		yes	yes	yes	yes	yes
Axle with 8 wheel studs		yes	yes	yes	yes	yes
Single wheels		750x10 12PR	27X10-12 14PR	250X15 16PR	250X15 18PR	250X15 20PR
Stabilizer foot		yes	yes	yes	yes	yes

The technical data are indicative, the builder reserves him to modify them in every moment. All the standard measures are modifiable on application of the Client. Available to asked for a vast range of accessories.



ATHENE II

PATENTED VERTICAL AND MECHANICAL CUTTER-MIXER-DISTRIBUTOR TRAILED WAGON

PATENTED WITH TWO INTERSECTING AUGERS

Leader Unifeed Vertical System by AG.M



AUGERS MOUNTED ON THE SAME PLANE WITH SYNCHRONISED INTERSECTION AS PATENT OF 1984



MAGNET WITH REVOLVING SUPPORTS



ATHENE II MECHANICAL TRAILED WITH TWO AUGERS

Model		ATHENE II	ATHENE II	ATHENE II	ATHENE II	ATHENE II
Series		AUTHENTIQUE	AUTHENTIQUE	AUTHENTIQUE	AUTHENTIQUE	AUTHENTIQUE
Capacity c. m.		12	14	17	20	25
Required power (PTO 540)	CV min/max Kw min/max	75/95 55/70	80/100 59/74	90/110 66/81	95/120 66/81	100/130 71/96
Length mm		6120	6300	6360	7100	7350
Width mm		2200	2350	2450	2550	2550
Height mm		2600	2700	2950	3100	3250
Weight kg		5160	6550	6600	7840	7900
Frame		yes	yes	yes	yes	yes
The mixing tank is 8 mm thick welded on the cylindrical bottom		yes	yes	yes	yes	yes
Bottom tank thickness mm		15	18	18	20	20
N° 2 Counter-knives		yes	yes	yes	yes	yes
Special unloading security plate		yes	yes	yes	yes	yes
Unloading hatch back port endowed with hydraulic piston		yes	yes	yes	yes	yes
N° 2 Special vertical mixing augers 15 mm thick		yes	yes	yes	yes	yes
N° 2 Planetary Gearboxes		yes	yes	yes	yes	yes
Weighing system equipped with 4 loading cells		yes	yes	yes	yes	yes
Bilateral unloading belt made of rubber		yes	yes	yes	yes	yes
Unloading height mm		620	620	620	620	620
Track mm		2100	2100	2200	2200	2300
N. 4 wheels (or n. 2 single wheels)		215/75 R 17.5	215/75 R 17.5	245/70 R 17.5	245/70 R 17.5	265/70 R 19.5
N. 1 axle with 8 studs		yes	yes	yes	yes	yes
Two speeds gearbox		yes	yes	yes	yes	yes
Stabilizer foot		yes	yes	yes	yes	yes

The technical data are indicative, the builder reserves him to modify them in every moment. All the standard measures are modifiable on application of the Client. Available to asked for a vast range of accessories.



MARATHON II

VERTICAL MECHANICAL CUTTER - MIXER - DISTRIBUTOR
TRAILED WAGON - PATENTED WITH TWO INTERSECTING
AUGERS



ANTI-CORROSIVE TREATMENT

All wagons are sandblasted and painted with specific products



NEW INDEPENDENT SYSTEM WITH ELECTRIC VALVES TO CONTROL THE DISCHARGE DOOR, THE STABILIZER FOOT, THE COUNTER-KNIVES, THE DISCHARGE RIBBON – WITH **PROPORTIONAL** SPEED



MARATHON II VERTICAL MECHANICAL TRAILED DOUBLE AUGER WAGON

Model	MARATHON II	MARATHON II	MARATHON II	MARATHON II
Series	AUTHENTIQUE	AUTHENTIQUE	AUTHENTIQUE	AUTHENTIQUE
Capacity MC	17	20	25	30
Required power (PTO 540)	CV min/max -hp min/max 66/81	90/120 66/88	100/150 74/110	110/180 81/132
Width mm	7300	7450	7800	7930
Length mm	2450	2500	2550	2550
Height mm	2750	2900	3150	3350
Weight Kg	7550	7920	8240	9800
Double h-frame built in high resistance plate	yes	yes	yes	yes
Ladder with viewing platform	yes	yes	yes	yes
The mixing tank is 8 mm thick welded on the bottom	yes	yes	yes	yes
Bottom tank thk mm	20	20	20	20
N° 2 counter-knives	yes	yes	yes	yes
Special unloading security plate	yes	yes	yes	yes
Unloading port endowed by hydraulic piston	yes	yes	yes	yes
N°2 Special vertical mixing auger thk 12 mm	yes	yes	yes	yes
N° 2 Planetary gearboxes	yes	yes	yes	yes
Auger knives n°	16	17	18	20
Weighing system with n° 4 loading cells	yes	yes	yes	yes
Bilateral unloading belt made of rubber	yes	yes	yes	yes
Unloading height mm	620	620	620	620
Track mm	2200	2200	2300	2300
N° 4 wheels	245/70 R 17.5	265/70 R 19.5	265/70 R 19.5	275/70 R 22,5
N° 1 Axle (boogie on demand for heavy load)	8 studs	8 studs	10 studs	10 studs
Two speeds gearbox	yes	yes	yes	yes
Stabilizer foot	yes	yes	yes	yes

The technical data are indicative, the builder reserves him to modify them in every moment. All the standard measures are modifiable on application of the Client. Available to asked for a vast range of accessories.



APACHE II- III

**PATENTED VERTICAL AND MECHANICAL CUTTER-
MIXER-DISTRIBUTOR TRAILED WAGON WITH TWO OR
THREE AUGERS ON DIFFERENT PLANES**



CAPACITY: 50 CUBIC METRES

**THE UNBEATABLE
EQUIPPED WITH TWO-
THREE SCREWS ON
DIFFERENT PLANES**

**for fast cutting of the fibrous
product and a fresh, soft and
homogeneous mixed**

It is a mechanical vertical mixer wagon with two or three augers on different planes, that, unlike the others, works with planes with a highness difference at least 15 cm.

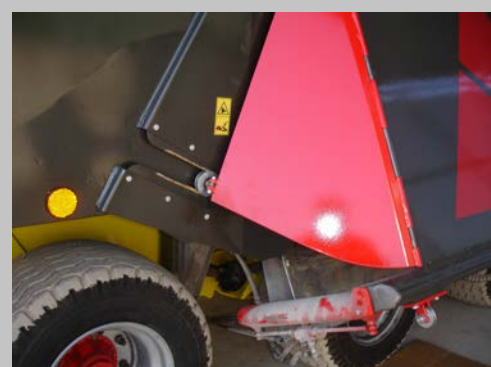
In this way the power of the gravity favors the passage of product using the fell by part to part. This cause a double vertical-rotary mixing-cycle and the difference of highness guarantees the intersection of the augers in the bottom part without collisions, with a variation of the speed of the revolutions too.

The result is an incredible mixing with the possibility to introduce every sort of product: long, short, packed, wet and dry.

This system is the best for preparing the portions dry-rations for feeding cattle and sheep that need big quantity of fibrous product too.



**SPECIAL VERSION FOR
PARMIGIANO**



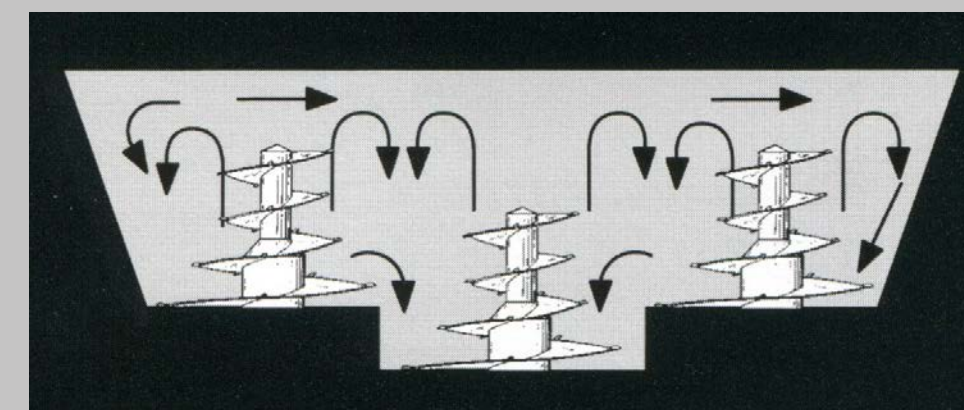
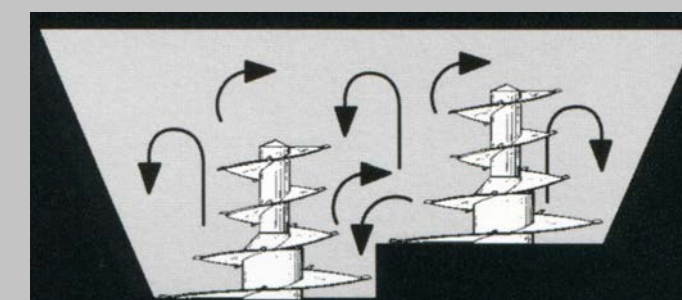
**LATERAL DISCHARGE
DOOR WITH 'GULL WINGS'
SHAPE**

- 3 AUGERS
- 42 SABER BLADES
- 82 BOXCUTTERS

LOWERED TRI-AXLE BOGIE: 2 OF 3 ARE STEERING



**NEW
PATENTED
SYSTEM WITH
2 OR 3
AUGERS
POSITIONED
ON
DIFFERENT
LEVELS**



MODUS II-III

VERTICAL AND HYDRAULIC CUTTER-MIXER-DISTRIBUTOR TRAILED WAGON WITH TWO AUGERS ON DIFFERENT PLANES - 0/50 REV/MIN



Hydrostatic transmission.

A special multiplier drives the two or the three variable varying flow pumps with electronic control are equipped with potentiometers which allow to individually select the number of revolutions of the hydraulic motors driving the augers from 0 to 50 per minute. With this solution the user can, according to the product that has to be cutted, mix, download or choose the desired number of revolutions. Furthermore, the transmission has the advantage of not overloading the tractor engine in the event that it should restart the augers with the wagon already filled with product, having the possibility to choose of starting with the lowest number of revolutions of the same.

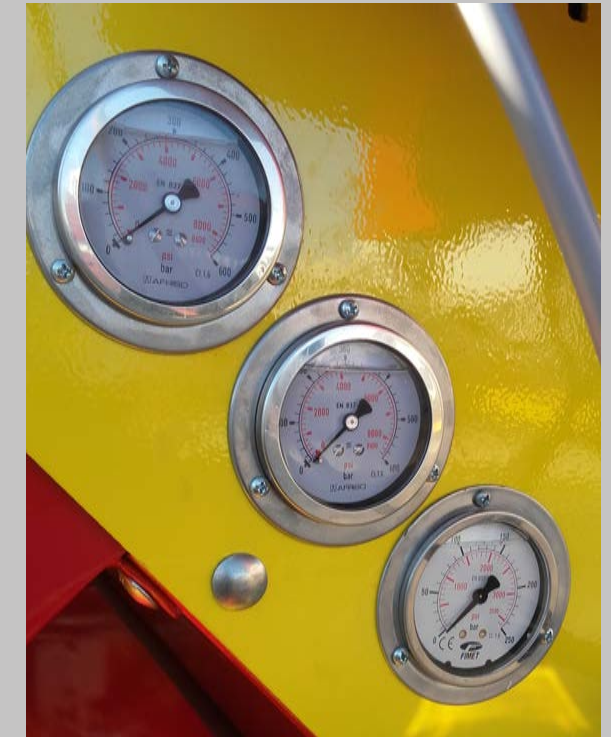
The loading belt, the tailgate, the hydraulic foot, the counter-knife and any eventual accessory is electrically powered.



**HEAT EXCHANGER WITH
HYDRAULIC FAN**



**NEW HYDRAULIC SYSTEM EQUIPPED
WITH ELECTROVALVES AND VARYING
FLOW PUMPS THAT WORK
INDEPENDENTLY. THEY ARE ALSO COMPLETED OF TWO
POTENTIOMETERS, GIVING THE POSSIBILITY TO SELECT THE DESIRED
NUMBER OF REVOLUTION PER MINUTE, FROM 0 TO 50**



**MAGNETIC DOSER ROLLER FOR
AN HOMOGENEOUS
DISCHARGE, PARTICULARLY
INDICATED FOR DRY MIXING**





HYDRAULIC
DISCHARGE
EXTENSION



SPECIAL MAGNETIC ROLL

HYDRAULIC HOPPER



VERSION EQUIPPED WITH FORAGE
CHARGER



..... AND SHE
WILL EAT AND
WILL BE
SERVED LIKE A
QUEEN



APACHE II MECHANICAL TRAILED PATENTED WAGON WITH TWO AUGERS ON DIFFERENT PLANES

Model		APACHE II	APACHE II	APACHE II	APACHE II	APACHE II
Series		AUTHENTIQUE	AUTHENTIQUE	AUTHENTIQUE	AUTHENTIQUE	AUTHENTIQUE
Capacity c. m.		14	17	20	25	30
Required power	CV min/max	80/100	90/110	90/120	100/150	110/180
	Kw min/max	59/74	66/81	66/88	74/110	81/132
Length mm		7050	7300	7700	7950	7990
Width mm		2400	2450	2500	2550	2800
Height mm		2650	2850	3000	3250	3450
Weight kg		7400	7750	9300 (10000 with bogie)	9700 (10400 with bogie)	11090 bogie
Double-H frame built in height resistance plate resistenza		yes	yes	yes	yes	yes
Ladder viewing platform		yes	yes	yes	yes	yes
The mixing tank is 8 mm thick welded on the bottom		yes	yes	yes	yes	yes
Bottom tank with reinforcement frame thk mm		18	18	20	20	20
N° 2 Counter-knives		yes	yes	yes	yes	yes
Special unloading security plate		yes	yes	yes	yes	yes
Unloading hatch back port endowed with hydraulic piston		yes	yes	yes	yes	yes
N° 2 Special vertical mixing augers 15 mm thick		yes	yes	yes	yes	yes
N° 2 Planetary Gearboxes		yes	yes	yes	yes	yes
Auger knives n.		15	16	17	18	20
Weighing system with 4 loading cells		yes	yes	yes	yes	yes
Bilateral unloading belt made of rubber		yes	yes	yes	yes	yes
Unloading height mm		830	830	830	830	830
Track mm		2100	2200	2200	2300	2300
N. 1 Axle (boogie on demand for heavy load)		8 wheel studs	8 wheel studs	10 wheel studs	10 wheel studs	10 wheel studs
Two speeds gearbox		*	*	*	*	*
N°2 Wheels		435/50 R 19.5	435/50 R 19.5	435/50 R 19.5	445/55 R 19.5	275/70 R 22,5
Stabilizer foot		yes	yes	yes	yes	yes

The technical data are indicative, the builder reserves him to modify them in every moment. All the standard measures are modifiable on application of the Client. Available to asked for a vast range of accessories.

MODUS II VERTICAL TRAILED WAGON WITH 2 AUGERS ARRANGED ON DIFFERENT LEVELS
INTERNATIONAL PATENT HYDROSTATIC 0/55 rev/min

Model	MODUS II	MODUS II	MODUS II
Series	AUTHENTIQUE	AUTHENTIQUE	AUTHENTIQUE
Capacity MC	20	25	30
Required power	80/130	90/150	100/180
	59/96	66/110	74/133
Width mm	7450	7800	7930
Length mm	2500	2550	2800
Height mm	3000	3250	3450
Weight Kg	9600 (10300 with bogie)	10200 (10900 with bogie)	11500 (12200 with bogie)
Double h-frame built in high resistance plate	yes	yes	yes
Ladder viewing platform	yes	yes	yes
The mixing tank is 8 mm thick welded on the bottom	yes	yes	yes
Overflow ring	yes	yes	yes
Bottom tank with reinforcement frame thickness mm	20	20	20
Special unloading security plate	yes	yes	yes
Unloading hatch back port endowed with hydraulic piston	yes	yes	yes
N° 2 Special vertical mixing augers 15 mm thick	yes	yes	yes
Augers' speed regulator	yes	yes	yes
N° 2 gear motors for auger of mixing	yes	yes	yes
INDIPENDENT HYDRAULIC SYSTEM	yes	yes	yes
N°1 overdrive with N°2 pumps coupled delivery variable pistons (Sauer Danfoss) for the auger running and 1 gear pump for services	yes	yes	yes
Heat exchanger with hydraulic fans	yes	yes	yes
Alternator for independent control of electrics apparatus	yes	yes	yes
Electro-hydraulic controls	yes	yes	yes
Weighing system TS 2000 digital with 40 FORMULAE and 30 INGREDIENTS for counter-knives controls	yes	yes	yes
N° 2 Electronic Cut	yes	yes	yes
Push-button panel	yes	yes	yes
N° 4 loading cells	Ø 70 mm	Ø 70 mm	Ø 70 mm
Bilateral unloading belt made of rubber	yes	yes	yes
Unloading height mm	830	830	830
Track mm	2200	2300	2300
N° 1 Axle (boogie on demand for heavy load)	10 studs	10 studs	10 studs
N°2 wheels	435/50 R 19.5	455/40 22.5	495/45 22.5
Stabilizer foot	yes	yes	yes

The technical data are indicative, the builder reserves him to modify them in every moment. All the standard measures are modifiable on application of the Client. Available to asked for a vast range of accessories.



PRESTIGE

VERTICAL CUTTER-MIXER-DISTRIBUTOR SELF-PROPELLED WAGON WITH SINGLE AUGER



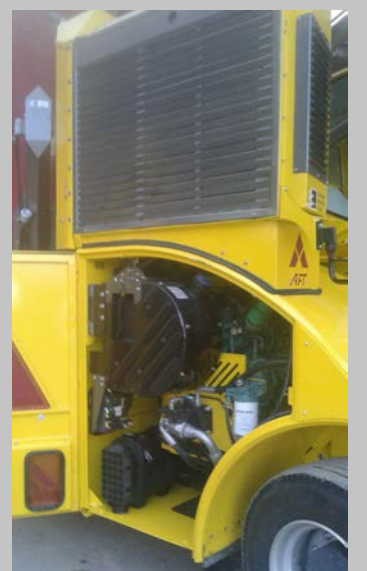
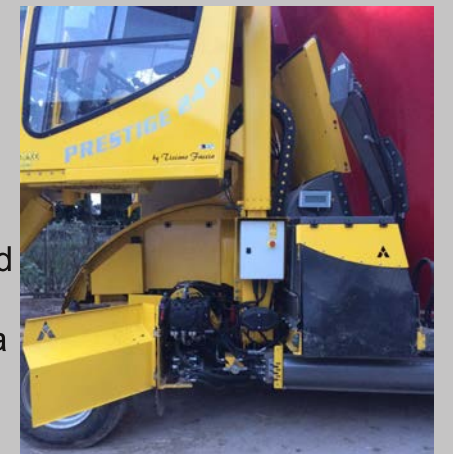
ALL THE MODEL ON REQUEST
ARE AVAILABLE IN THE ROAD
VERSION



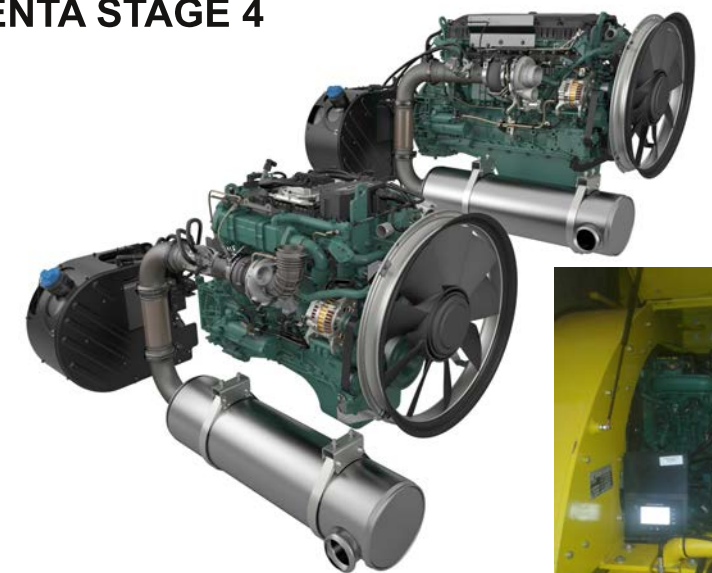
- ELECTRICAL SYSTEM WITH NYTROGEN SWITCHES, SELF-RESTORING FUSES AND LED LIGHTS
- CONTROL OF THE DISCHARGE DOOR OPENING FROM THE CONSOLE CABIN



Prestige wagons for farmers who only want the best. Innovative design, elevating cab with high flexibility of use, advanced technological solutions covered by International patents. These are only a few particularities of the new self-propelled wagons PRESTIGE and ZENITH II built on a structural double-H frame made of high strength metal sheet. In the two carrying spars it includes, the oil tank on cabin side and the fuel tank on the opposite side; this industrialized solution allows the mechanical cleaning (all the components are bolted), a better disposal of the hydraulic oil cooler and shorter pipes, positioned close to the hydraulic components machine. The tanks are constructed to enable the wagon to work in climb and descent, with electric level indicators, max temperature bulb. **The customer can choose the right-hand-drive version or the left one.**



ENGINE: VOLVO
PENTA STAGE 4



Four hydrostatic pumps (Sauer Danfoss) (three pumps for the Prestige) with electronically controlled varying flow piston in line with the engine guarantee the operation of the Zenith's augers, the motion of the machine and the rotation of the miller.

A gear pump ensures the operation of the cooling fan of the three radiators.

For the operation of the various organs of movement we wanted to give something technological and innovative with a LS (Load Sensing - load signal) piston pump which together with the proportional distributors allows, thanks to the electronic control, the flow management of the oil on the basis of the power demand and the speed of movement of each organ. In this way there is less hydraulic oil heating because the pump is made to flow the oil only as a result of the signal received otherwise is maintained the resting state. The LS pump also runs the proportional steering.

It follows a lower power absorption by the engine and therefore lower fuel consumption and hydraulic oil decay.

NEW PATENTED TILTING MILLER WITH PROPORTIONAL CONTROL OF THE 2 ROTORS, OF THE ARM ELEVATION AND OF THE CHARGING RIBBON



SELF-CLEANING OIL-WATER-INTERCOOLER-
AIR CONDITIONING RADIATOR



- 4 STEERING WHEELS ELECTRICALLY CONTROLLED WITH EVENTUAL DOG'S OR CRAB'S STEP MOVING
- PROPORTIONAL POWER STEERING WITH LS CONTROL

This pump's system allows:

- the installation of a potentiometer for the discharge conveyor which regulates the movement according to the speed required by the operator;
- the installation of a proportional joystick which regulates the movement of the miller arm (fast and slow);
- the fixed setting of those moving parts that must maintain the same speed, even with the change of revolutions of the engine (from 1000 to 2350 revolutions / minute of engine).



TECHNICAL INNOVATION.

Tiziano Faccia

created and patented a new de-ensiler-conveyor with 2 rotors.

- **Optimized cutting of the fibrous products (straw-hay)**
- **No clogging on the charge opening**
- **Reduced usury**
- **Less power required during loading**
- **No abuse of silage products**
- **Reduction of the working time**
- **Reducing consumption**
- **Reduction of maintenance**
- **Reduction of pollution**

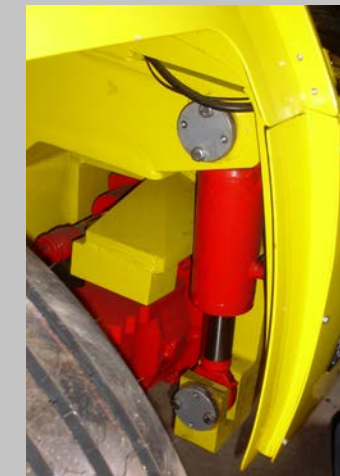
TILTING MILL THAT THROUGH AN HYDRAULIC PYSTON CONTROLLED BY THE OPERATOR ALLOWS TO DIRECT THE BUCKET IN ACCORDANCE TO REQUIREMENTS OF THE LOADING STEP



Prestige and Zenith II have a new cutting system with 2 close, overlapping mills, equipped with cutting blades. The upper mill turns clockwise, and the lower anticlockwise, thereby bringing the product into the centre, and to the loading conveyor belt. The desilaging bucket is 1900 mm wide, and the mills rotate up to a max. of 500 revs./minute. The desilaged product is conveyed to the arm where the 650 mm wide rubber load belt runs quickly (600 revs./min.), taking the product into the tub. The self-loading mill arm is high performance: it has a hydraulic engine, allowing the mill to work on all types of silage and fibrous products, and can also load floured or cubed products. The operation is electronic with a potentiometer for the choice of revolutions desired.



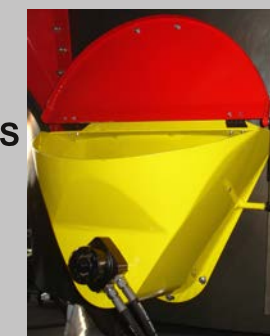
FULL ACCESSIBILITY TO THE ENGINE AND TO THE PUMPS



FRONT HYDRAULIC SUSPENSIONS



HYDRAULIC HOPPER FOR FLOURY PRODUCTS



ZENITH WITHOUT MILLER



SUPER COMFORT CABIN WITH FRONT ENTRANCE THAT FACILITIES THE ENTRY AND GIVES THE POSSIBILITY TO WORK NEAR SILOS WALLS WITHOUT PROBLEM OF MOVEMENT AND EXIT



LIFTING PISTONS

PRESTIGE WITH COVERAGE



PRESTIGE and ZENITH II

Every constructive detail of the vertical mixer-cutter-distributor self-propelled wagons PRESTIGE and ZENITH II are the result of the first self-propelled born in 1986 and of who invented this type of machine, also in the study of the cabin and its placement we wanted to give to the operator, the best comfort, ergonomics, visibility and safety. Its set back allows the operator during operation control of operations, a large glass area ensures good visibility, mirrors and rear view camera help the most difficult maneuvers. The front opening is ideal for getting on and off at any working condition, also close to the walls that contain the various silage. On the frame are positioned:

- front steering axle (CARRARO) with 10 columns with balancer and hydraulic suspensions that offer the maximum comfort;
- the rear differential axle (CARRARO) with 10 columns allows the movement of the machine by means of hydraulic motor Sauer Danfoss two speeds from 0 to 12 km/h in first gear and in the second from 0 to 25 km/h, on request also 40 Km/h;
- supports for the installation of the 4 weighing cells which support the mixing tank;
- the arm supporting the cutter;
- the VOLVO Engine (Tier4) located in a transversal position on 4 silent blocks;
- the vertical telescopic arm that lifts the cab;
- the radiators (oil, water, air);
- batteries, air filter, the various components (electrical, plumbing) and enclosures;
- the tank mixing (in the shape of reversed truncated cone) is constructed of sheet metal quality, the cylindrical thick bottom 25 is bolted to the weighing cell, at the center of the same is accommodated the hydraulic motor that supports the special mixing auger; this solution allows the loading of whole also wrapped round bales, giant bales, cubes ensiled grass, etc., furthermore this type of construction also increases the capacity of product to be mixed. The direct hydraulic motor on the auger does not need maintenance.



The actuation of the auger is hydraulic with electronic control, a potentiometer allows a speed of rotation from 0 to 55 rpm, thereby facilitating the setting of the desired speed, furthermore it is possible to choose the first gear from 0 to 30 rpm, or from the second 0 to 55 rpm, also in the final stage the discharge is facilitated by this solution, in fact, bringing the diesel engine to the maximum of the rotation and setting the auger at 55 revolutions / minute it has total emptying of the worked product. On the tub as standard is mounted the containment ring and along the walls are located two special hydraulic counter-knife ("ELECTRONIC CUT" or "INTELLIGENT TELESCOPIC CUT") electronically timed whose insertion takes place by means of hydraulic pistons and their operation is guaranteed in automatically by the programming of electronic weighing. This system reduces the processing time by about 50% and eliminates the escape of the product to be mixed and cutted.

PRESTIGE SELF-PROPELLED WITH SINGLE AUGER

MODEL		PRESTIGE	PRESTIGE	PRESTIGE	PRESTIGE
SERIES		AUTHENTIQUE	AUTHENTIQUE	AUTHENTIQUE	AUTHENTIQUE
CAPACITY M.C.		12	14	17	20
Bilateral unloading belt is made of rubber with stainless plate		yes	yes	yes	yes
Special unloading plate		yes	yes	yes	yes
N° 2 Electronic - cut		yes	yes	yes	yes
Weighing system TS2000 graphic with 40 RECIPES and 30 COMPONENTS for counter-knives control		yes	yes	yes	yes
Cabin that goes on		yes	yes	yes	yes
ENGINE: VOLVO Tier 4	N. CYLINDRES	4Ti	4Ti	4Ti	4Ti
	DISPLACEMENT CC	5100	5100	5100	5100
	HP	175	175	218	218
	Kw	129	129	160	160
	REVOLUTIONS	2200	2200	2200	2200
Rear drive		yes	yes	yes	yes
Length mm		7200	7500	7650	7800
Width mm		2500	2550	2900	2900
Mixing tank height mm (miller arm central height + 150 mm)		2930	3030	3150	3450
Weight Kg.		11400	12350	13050	13400
Axle base mm		3300	3650	3650	3650
N° 2 Front wheels		250 R 15	385/55 R 19.5	385/55 R 19.5	385/55 R 19.5
N° 2 Rear wheels		28 X 9 - 15	245/70 R 19.5	245/70 R 19.5	245/70 R 19.5
Rear track mm.		2100	2300	2300	2300
Front track mm		2000	2100	2100	2100
Unloading height mm		600	640	640	640
Speed Km/h		20	20	25	25
MILLING ONE OR TWO ROTORS WITH PATENT		yes	yes	yes	yes
Miller width mm.		1800	1900	1900	1900
Miller load speed kgx100xmin	Ensilage maize	12 16	12 20	12 20	12 20
	Ensilage medica	7 10	8 12	8 12	8 12

The technical data are indicative, the builder reserves him to modify them in every moment. All the standard measures are modifiable on application of the Client. Available to asked for a vast range of accessories.

ZENITH II SEMOVENTE BREVETTATO CON DUE COCLEE POSIZIONATE SU PIANI DIVERSI

MODEL		ZENITH II	ZENITH II	ZENITH II	ZENITH II
SERIES		AUTHENTIQUE	AUTHENTIQUE	AUTHENTIQUE	AUTHENTIQUE
CAPACITY M.C.		17	20	25	30
Bilateral unloading belt is made of rubber with stainless plate		yes	yes	yes	yes
Special unloading plate		yes	yes	yes	yes
N° 2 Electronic - cut		yes	yes	yes	yes
Weighing system TS2000 graphic with 40 RECIPES and 30 COMPONENTS for counter-knives		yes	yes	yes	yes
Cabin that goes on		yes	yes	yes	yes
ENGINE: VOLVO Tier 4	N. CYLINDRES	4Ti	4Ti	6Ti	6Ti
	DISPLACEMENT CC	5100	5100	7700	7700
	HP	218	218	252	286
	Kw	160	160	185	210
	REVOLUTIONS	2200	2200	2200	2200
Rear drive		yes	yes	yes	yes
Length mm		9170	9300	9650	9930
Width mm		2450	2500	2550	2550
Mixing tank height mm (miller arm central height + 150 mm)		2780	2900	3250	3500
Weight Kg.		13950	14600	15440	16130
Axle base mm		4700	4750	4850	4920
N° 2 Front wheels		385/55 R 19.5	385/55 R 19.5	385/55 R 19.5	385/55 R 19.5
N° 2 Rear wheels		435/50 R 19.5	435/50 R 19.5	495/45 22.5	495/45 22.5
Rear track mm.		2400	2400	2500	2500
Front track mm		2050	2050	2150	2150
Unloading height mm		830	830	830	830
Speed Km/h		25	25	25	25
MILLING ONE OR TWO ROTORS WITH PATENT		yes	yes	yes	yes
Miller width mm.		1900	1900	1900	1900
Miller load speed kgx100xmin	Ensilage maize	12 20	12 20	12 20	12 20
	Ensilage medica	8 12	8 12	8 12	8 12

The technical data are indicative, the builder reserves him to modify them in every moment. All the standard measures are modifiable on application of the Client. Available to asked for a vast range of accessories.



TECHNICAL ASSISTANCE

A direct technical support system is always available for the Customers.

Simply by making a telephone call or sending an e-mail, you will be immediately put in contact with our customer service department, which is always available to help you with any problem or provide technical assistance.

Assistance and Spare parts for vertical mixers:

tel. 0039 0495389029

aft@verticalmixer.com



Follow Tiziano Faccia and his continuous innovations:



tizianofaccia.altervista.org



**Leader Unifeed
Vertical System
by AG.M**

L.U.V.S. Leader Unifeed Vertical System srl
Via Fiesso, 18 - 35020 Arre (PD) Italy
tel. +39 049 5389029 - aft@verticalmixer.com
www.verticalmixer.com

